

Paradinha

CHORO

Nilton Delphim

♩ = 84

A

Dm

Em7(b5)

A7

Dm



6

Am

E7

A7

Dm

Em7(b5)



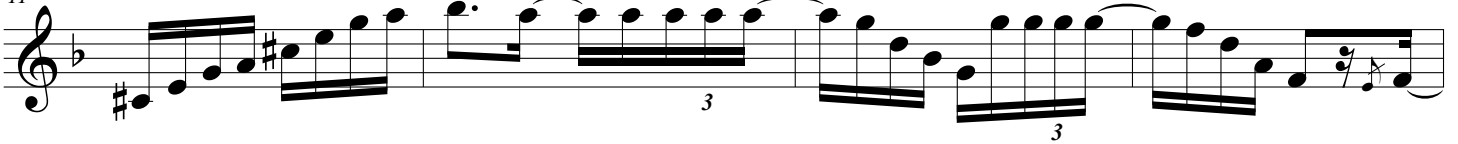
11

A7

D7

Gm

Dm



15

E7

A7

Dm

Dm

B

C7

F



20

Am7(b5)

D7(b9)

Gm

G#dim

F

G7



25

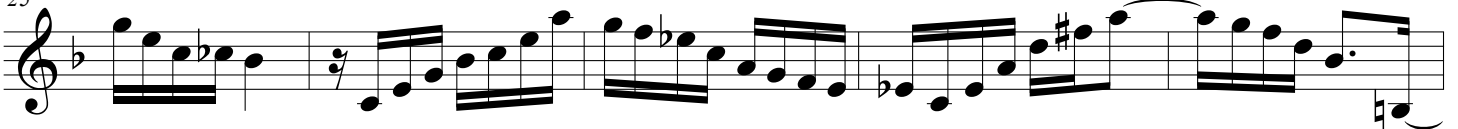
C7

F

Am7(b5)

D7(b9)

Gm



30

G#dim

F

C#7

Gm

C7

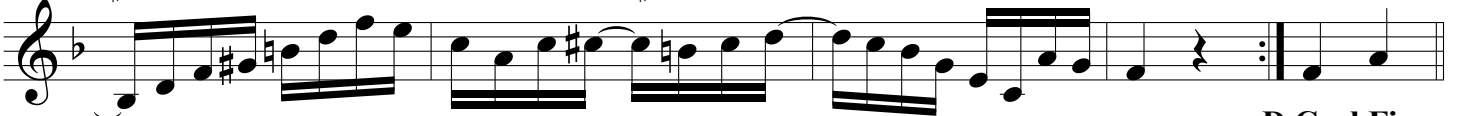
1.

F

2.

F

A7



D.C. al Fine